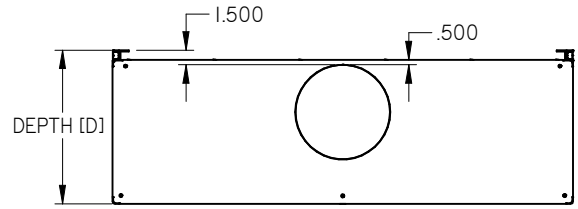
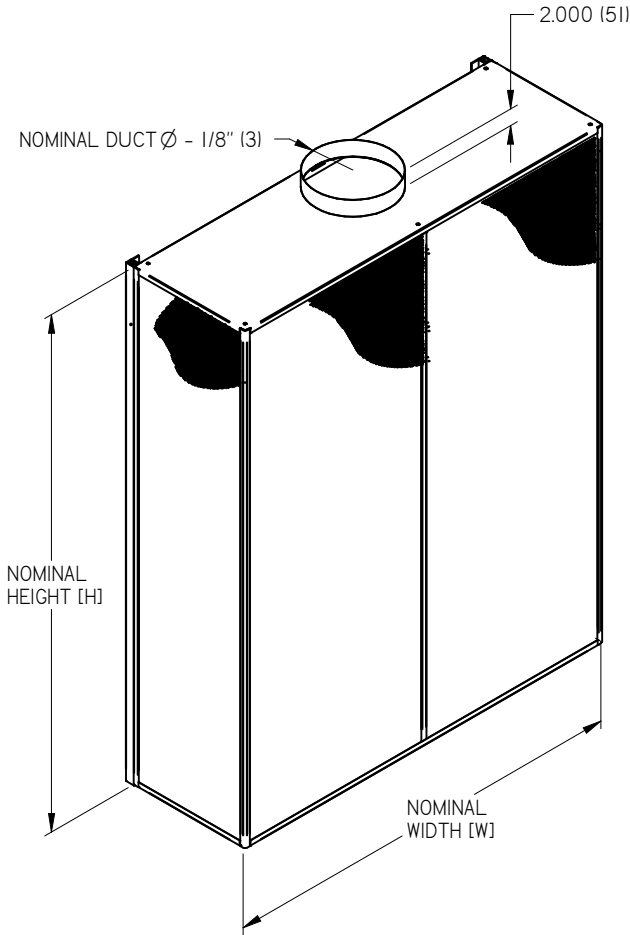
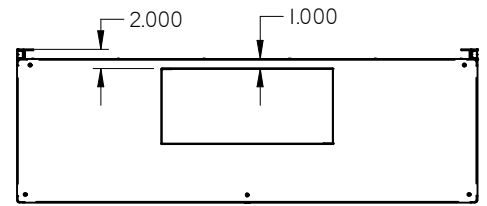


**DFE - DISPLACEMENT FLOW EXPOSED DIFFUSER**



ROUND INLET (TOP)



RECTANGULAR INLET (TOP)

**DIFFUSER MATERIAL**

- PERFORATED PANELS - 16 GA STEEL
- SOLID PANELS - 20 GA STEEL
- FRAME - EXTRUDED ALUMINUM

**SIZE**

**WIDTH AND HEIGHT (W x H):**

- MINIMUM SIZE: 24" x 24" (610 x 610)
- MAXIMUM SIZE: 48" x 60" (1219 x 1524) or 60" x 48" (1524 x 1219)

**DEPTH, D:**

- 13" (330) TO 18" (457)

**NOTES:**

- WIDTHS (W) EQUAL TO OR GREATER THAN 36" (915) WILL HAVE A CENTER MULLION
- ALL UNITS COME WITH INTERNAL BAFFLE

**AIR PATTERN**

- ONE-WAY (1W)
- THREE-WAY (3W)

**INLET LOCATION**

- TOP (T)
- REAR (R)

**INLET SIZES**

- 10" (254) ROUND
- 12" (305) ROUND
- 14" (356) ROUND
- 14" x 6" (356 x 152) RECTANGULAR
- 16" x 8" (406 x 203) RECTANGULAR
- 18" x 8" (457 x 203) RECTANGULAR
- 20" x 10" (508 x 254) RECTANGULAR
- 24" x 8" (610 x 203) RECTANGULAR

**PROTECTIVE FILM (PF)**

- PROTECTIVE FILM ON FACE AND INLET

**ACCESSORIES**

- BASE COVER - SEE SUBMITTAL 270073
- DUCT COVER - SEE SUBMITTAL 270073

**FINISH**

- B12 STANDARD WHITE
- B11 PURE WHITE
- B15 GREY
- B17 BLACK
- PC12 PRIME COAT
- B25 CUSTOM MATCHED COLOR
- SPECIAL FINISH

ALL METRIC DIMENSIONS ( ) ARE SOFT CONVERTED. IMPERIAL DIMENSIONS ARE CONVERTED TO METRIC AND ROUNDED TO THE NEAREST MILLIMETER.

<b>PROJECT:</b>		<b>PRICE</b>
<b>ENGINEER:</b>		
<b>CUSTOMER:</b>		<b>NS</b>
<b>SUBMITTAL DATE:</b>		<b>270072</b>
<b>SPEC. SYMBOL:</b>		<b>2018/06/25</b>
		<b>DFE</b> <b>EXPOSED DISPLACEMENT</b> <b>DIFFUSER</b>